



Brief Analysis on Lexis+™ Canada

Leverage the exclusive equation: LexisNexis® proprietary expertise plus the latest data science that targets highly relevant citations and legal concepts.

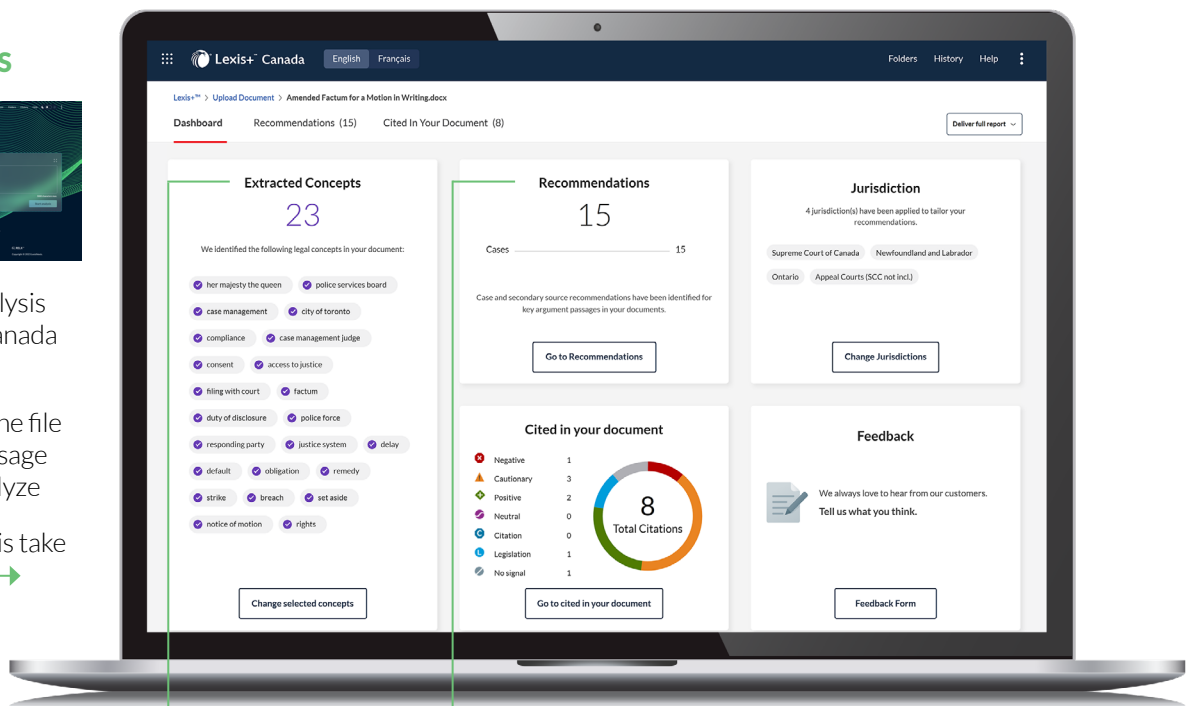
WITH LEXIS+ BRIEF ANALYSIS YOU CAN:

- + Retrieve solid authority recommendations without entering a search.
- + Find and leverage the most critical passages in lengthy documents, saving valuable time.
- + Gain even greater confidence that you haven't missed anything in your legal document.
- + Analyze opposing counsel's legal documents and easily note up their citing references to verify the validity of what they have cited.
- + Update old legal memos or legal documents to verify the cited cases and arguments are still valid, and identify whether there are new cases that should be considered.
- + Analyze a paragraph(s) from a treatise, case or other legal document, identify case recommendations, note-up citing cases and branch out your research from there.

HOW IT WORKS



1. Select Brief Analysis on the Lexis+ Canada homepage.
2. Drag and drop the file or paste the passage you want to analyze
3. Let Brief Analysis take it from there! →



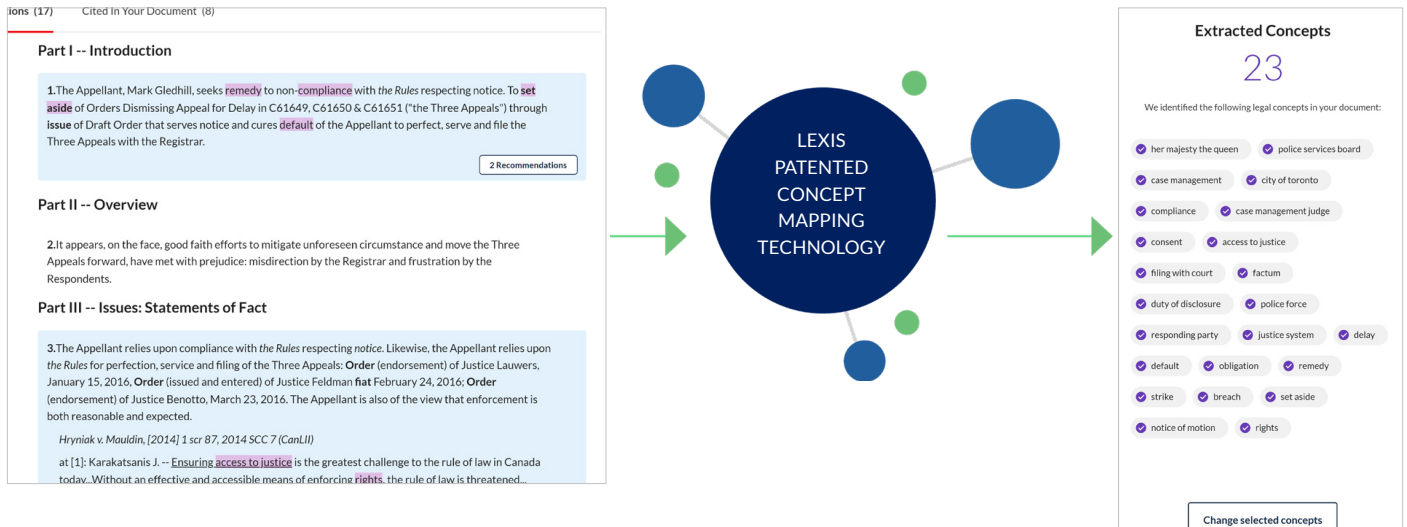
PATENTED CONCEPT MAPPING: identifies legal and fact-based concepts based on their relevance and use across Lexis+ authority, and our comprehensive collection of case law.

NOVEL DEEP LEARNING: detects and selects key arguments by analyzing the citations, language, quotations—even style attributes and the passage's position in briefs.

CUSTOMIZED WORD EMBEDDING: recognizes passages with similar meaning even if the terms may not match. This technology is continually trained to recognize more legal terms and phrases.

PATENTED CONTENT MAPPING

- + Finds legal and fact-based concepts.
- + Identifies different phrasing for the same idea.
- + Matches to custom dictionary with 100K+ unique concepts from Lexis+ legal content.



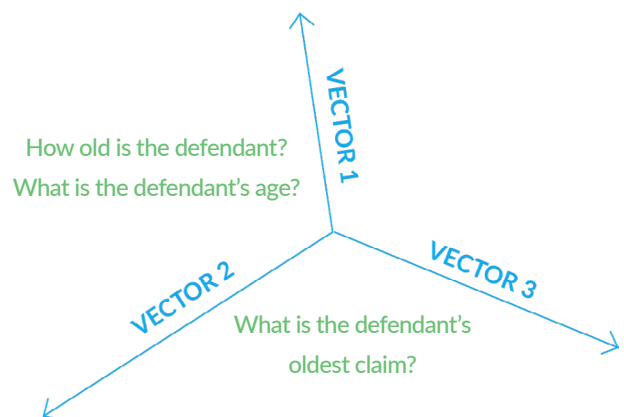
NOVEL DEEP LEARNING

- + Brief Analysis uses unique machine learning techniques to identify "Key Passages", analyzing the language and structure of the document to pinpoint important arguments or points of law in the document. Quick navigation to Key Passages provides insightful recommendations to enhance your brief.

The screenshot shows a legal document analysis interface. The main document is titled "MOTION IN WRITING" and includes sections for "Introduction", "Overview", and "Issues: Statements of Fact". A "Recommendations for selected passage (2)" panel is open on the right, listing relevant cases such as "Gledhill v. Toronto (City) Police Services Board, [2016] O.J. No. 4184, [2016] O.J. No. 4184" and "Coote v. Ontario (Human Rights Commission), [2010] O.J. No. 1926, [2010] O.J. No. 1926". The interface also includes a "Deliver full report" button and a "Cases (2)" section with a "Deliver this list" option.

CUSTOMIZED WORD EMBEDDING

- + Word embedding refers to language modeling techniques where words or phrases are parsed for their semantic meaning and mapped to mathematical representations or "vectors" to identify similarity between words and phrases, even when different language is used. LexisNexis has implemented a customized version of word embedding that is trained to recognize legal language so the language in your document is processed and matched based on intent and meaning, even where it does not match the language in cases and other briefs word-for-word.



Learn More: LexisNexis.ca/LexisPlus